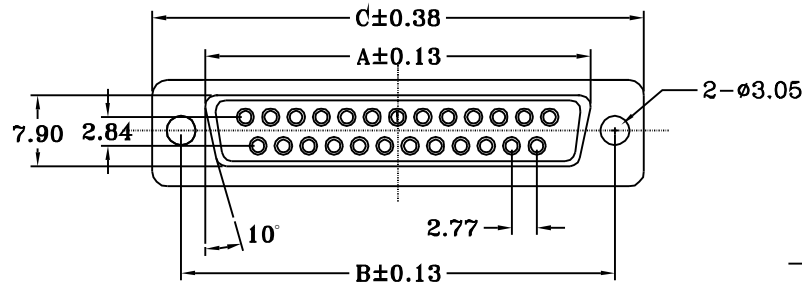
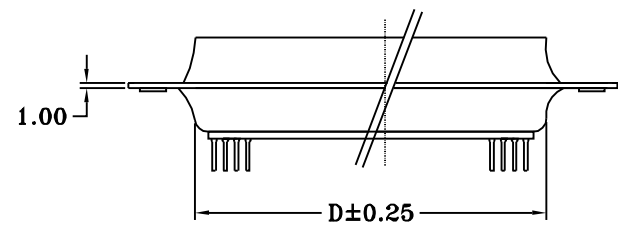


1 2 3 4 5 6 7 8

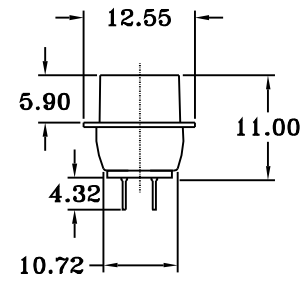
A



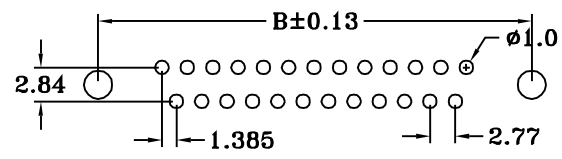
B



C



D



E

PCB LAYOUT

SPECIFICATION

Electric
 Current Rating: 5 Amp
 Dielectric Strength: 1000V/ Minute.
 Insulator Resistance: 1000M ohm Min.
 At 500V DC
 Temperature: -55°C ~+105°C

Material

Shell: Zinc Plated Or Tin plated
 Pin Contact: Brass, Gold Plated Over Nickel
 Insulator: PBT&Glass-Fiber Reinforced
 , UL94V-0

POLES	A	B	C	D
9F	16.33	24.99	30.81	19.28
15F	24.66	33.32	39.14	27.51
25F	38.38	47.04	53.04	41.30
37F	54.84	63.50	69.32	57.71
50F	52.34	61.11	66.92	55.30

ORDER INFORMATION

Contact No.	Contact Type	Mounting Option	Accessories	Shell Plating	Contact Plating	Others
C0541- 09	F	A	A	T	S	W
09 15 25 37 50	F: Female	A: Through Hole	A: Non Accessories	T: Tin N: Nickel Z: Zinc(Chromate)	S: Selective Gold G: Gold Flash A: Gold 5u" B: Gold 10u" C: Gold 15u" D: Gold 30u"	B: Black Insulator W: White Insulator L: Blue Insulator G: Grey Insulator

G

玄茂科技股份有限公司
 HSUAN MAO TECHNOLOGY CO., LTD.

UNIT	SCALE	PART NAME
MM	2:1	D-SUB P. C. B. STRAIGHT (FEMALE)

H

APPD.	CKD.	TOLERANCE	PART NO.	REV.
制表日: 2000/06/07		± 0.5	C0541-XXFAAXXX	A
DRAWING. Jane	APPROVED			

1 2 3 4 5 6 7 8